

Leica Cyclone 8.0 VIEWER & VIEWER Pro Point Cloud Visualisation



Easily manage which ScanWorld is visible in the ScanWorld Explorer



Ability to quickly measure between scan points and/or modelled objects

3D Limit boxes allow users to focus in on specific areas

Redlines make communicating with others involved in the project more successful

Powerful yet affordable 3D point cloud visualisation, measurement, mark up, and data exchange software for professionals.

Leica Cyclone VIEWER and VIEWER Pro provide professionals with powerful 3D viewing and navigation of rich High-Definition Survey (HDS) point cloud data and associated 3D models. Cyclone VIEWER is a free standalone software for 3D viewing only, while affordable Cyclone VIEWER Pro provides additional, valuable measurement, mark up, and data exchange capabilities. Professionals can analyse laser scan data and 3D models quickly, while collaborating for better informed project decisions.

Features and Benefits

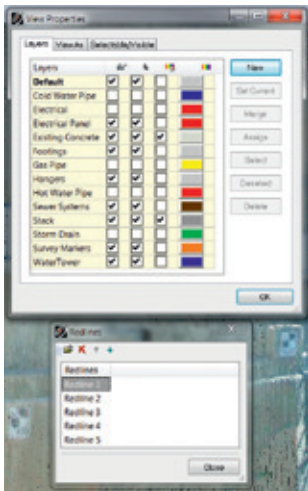
- Powerful 3D Navigation and Visualisation allows users to smoothly fly through and around point clouds, as well as pan, zoom, and rotate views
- Measurements between selected scan points and/or modeled surfaces
- Mark up scan images with redline tools to effectively communicate with other
- Data management and exchange module allows numerous import and export formats to be supported

- when it has to be **right**

Leica
Geosystems

Leica Cyclone 8.0 VIEWER & VIEWER Pro

Point Cloud Visualisation, Measurement, Mark up and Data Exchange



Layers and Redlines can be easily administered through dialogue boxes.



The customisable export manager gives flexibility during data transfer.

Additional visualisation tools such as layers and 3D Limit Boxes allow users to focus in on specific areas of laser scan and model data.

Measurement and Mark up

Cyclone VIEWER Pro's rich set of complex 3D measurement tools enables users to measure directly between selected scan points and/or modeled surfaces. Measurements stored during one "session" can be recalled later and managed. Users can also easily mark up scan images with redline tools to effectively communicate with other. "Redline Manager" allows users to handle multiple mark ups at once, including appropriate view points for individual redlines.

Collaboration via Databases

Cyclone's unique Object Database Client/Server architecture lets multiple users operate on the same scan data set simultaneously. Users can collaborate directly and share data across networks.

Data Management and Exchange

Leica Cyclone VIEWER Pro also serves as a versatile data exchange module. Numerous import and export formats are supported. Previously modelled content can be easily exported into industry standard formats for further use in other software. Industry standard, customisable and vendorspecific point cloud ASCII data export formats facilitate data exchange with other 3D point cloud processing and CAD Packages.

Powerful 3D Navigation and Visualisation

Leica Cyclone VIEWER and VIEWER Pro have many features that let users work efficiently with rich laser scan data sets. Users can smoothly fly through and around point clouds, as well as pan, zoom, and rotate views. Cyclone's Level of Detail graphics display engine provides highly efficient 3D visualisation and manipulation of even the largest point clouds and models.

For improved comprehension of dense point clouds, advanced visualisation modes allow users to see through walls, apply shaded rendering, enhance edge display, and more.

Specifications*	
Data Import¹	ASCII (XYZ, SVY, PTS, PTX,TXT, customised formats) Zollner+Frohlich ZFS, ZFC Riegl .3DD COE (Cyclone Object Exchange) – Free Plug-In AutoCAD, MicroStation via Cyclone COE BMP, JPEG CGP Leica System 1200
Data Export¹	Seamless two-way data integration with AutoCAD and MicroStation enabled by: <ul style="list-style-type: none"> – Leica Geosystems neutral file format, COE (Cyclone Object Exchange) – Cyclone COE Data Transfer plug-ins (Free) ASCII / DXF / COE – AutoCAD, MicroStation via Cyclone COE Data – Transfer plug-in (free) BMP, TIFF, JPEG LandXML for civil applications SDNF and PCF export for plant model data Leica System 1200 Cyclone II TOPO 2.0 (.cwf and .pci) Rectified, dimensionally correct orthophotos

Hardware and System Requirements
Minimum Specifications
Processor: 2 GHz Dual Core processor or better
RAM: 2 GB (4 GB for Windows Vista or Windows7)
Hard Disk: 40 GB
Display: SVGA or OpenGL accelerated graphics card (with latest drivers)
Operating system: Windows XP (SP2 or higher) (32 or 64), Microsoft Vista** or Windows7 (32 or 64)
File System: NTFS
Recommended Specifications
Processor: 2.5 GHz Dual Quad Core i7 or higher
RAM: 4 GB for 32 bit OS and 8 GB's or more 64 bit OS
Hard Disk: 1 TB SATA
Large project disk option: RAID 5, 7, or 10 with SSD drives
Display: Nvidia GeForce250 or ATI 6850 or better, with at least 1 GB memory
Operating system: Microsoft Windows7 64 bit
File System: NTFS

Windows is a registered trademark of Microsoft Corporation. Other trademarks and trade names are those of their respective owners.

Illustrations, descriptions and technical data are not binding. All rights reserved. Printed in Switzerland – Copyright Leica Geosystems AG, Heerbrugg, Switzerland, 2011. 763960en – XII.12 – galledia

* Reference the Leica Cyclone 8.0 Technical Specifications document for a complete listing of product specifications.
 ** Some systems may not support Windows Vista's Desktop Windows Manager (DWM) with Leica Cyclone and must be operated in Windows Classic Look.